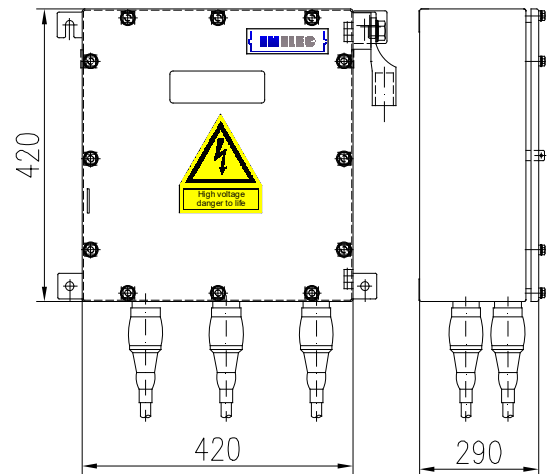


- ① LINK BOX
- ② EARTHING BUS BAR
- ③ CABLE LUGS
- ④ DISCONNECTABLE LINK BARS
- ⑤ BONDING CABLE

LIST OF MAIN PARTS

Item	Name of parts	Materials
1	CABINET	STAINLESS STEEL
2	SUPPORT INSULATOR	EPOXY
3	CABLE LUG (not supplied)	TINNED COPPER
4	GLAND FOR BONDING CABLE	STAINLESS STEEL
5	DISCONNECTABLE LINK BARS	TINNED COPPER
6	EARTHING BUS BAR	TINNED COPPER
7	SYSTEM EARTHING	STAINLESS STEEL
8	HEAT SHRINKABLE TUBES	MWTD
9	DOOR FIXING BOLTS	STAINLESS STEEL
10	PADLOCK FACILITY	STAINLESS STEEL
11	COVER	STAINLESS STEEL

Specifications	
Protection degree	IP68
Bonding cable (Single)	max.300 mm <sup>2</sup>
Weight	app. 27 Kg.
Volume of Filling compound (optional)	-
Colour	RAL 7032



TYPE / DRAWING NO :

ARTICLE NO:

**LB.U.W.E.6.0 / 06.09.02**

**08102001**

Earthing Bonding Link Box For Universal Wall Type

Drawn : 14.01.2022 / G.O.

Approved : 14.01.2022 / S.E.

# LINK BOX TECHNICAL DATA SHEET

**Drw. No. 06.09.02**  
**Article No. 08102001**

**Issued Date:** 11.09.2020  
**Rev. Date:** 5.01.2022  
**Rev.** 01

Type	LB. U / W E . 6 . 0
- Description	Earthing Bonding Link Box for Universal Wall Type
- Designation	Wall Type
- Bonding	Earthing
- Sheath Voltage Limiter	N/A
- Phase No.	6
- Earth	0
<b>Drawing Number</b>	<b>06.09.02</b>
- Article No	08102001
<b>Electrical Characteristics</b>	
- Rated Frequency	50/60 Hz
- SVL Type (*)	N/A
<b>Protection Class</b>	<b>IP 68</b>
<b>Material</b>	
- Enclosure	Stainless Steel AISI304
- Body Thickness	2 mm
- Cover Thickness	3 mm
- Connection Links	10 µm Tinned Electrolytic Copper
- Connection Links Dimension	40x10 mm (400 mm <sup>2</sup> )
- Material of connection links cover	N/A
- Safety Earthing Connection	w/o Safety Earthing Connection
- Gasket	Silicone
- Cable Glands	6x48 mm
- Other Glands (PD Sensor Cables / IR Sensor Cables ... etc.)	N/A
- Cable Glands Insulation	Silicone gasket & EPR tape & Mastic Tape & Heat Shrinkable Tube
- Other Glands Insulation	N/A
- Insulation	Epoxy Support Insulator + Stainless Steel Base Plate
- Conductor Fixing	Cable Lug - 95-300 mm <sup>2</sup>
- Painting Process	Electro Static Polyester Powder Paint
- Painting Code	RAL 7032
- Labeling Material	Stainless Steel
- Fixing Bolts	A2 - AISI 304
- Protection Cover	N/A
- Separators	w/o separator
- Insulating Sheds	N/A
<b>AC Impulse Test</b>	
- Phase-to-Phase	N/A
- Phase-to-Earth	40 kV
<b>Voltage Withstand Test</b>	
- AC	20 kV/1 min
- DC	25 kV/5 min
<b>Short Circuit Test</b>	
- Symmetrical	40 kA/1 sec
<b>Internal Power Arcing Test (Symmetrical)</b>	
	40 kA/0.1 sec

\* In case of mismatch in given values, technical drawing provided along with the Order Confirmation is valid. Ask for conformity if SVL is out of order scope.

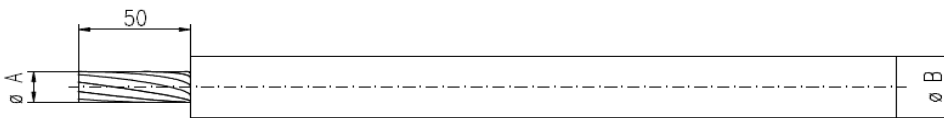
# LINK BOX TECHNICAL DATA SHEET

**Drw. No. 06.09.02**  
**Article No. 08102001**

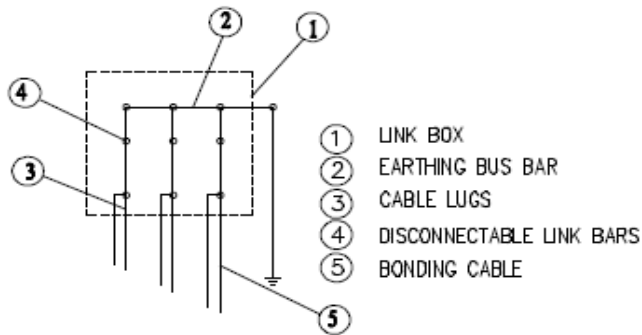
*Issued Date:* 11.09.2020  
*Rev. Date:* 5.01.2022  
*Rev.* 01

## Bonding Cable (\*)

- Type	Gland Dia		A		B		C		D		Single
Cross-Section (mm <sup>2</sup> )	Outer (mm)	Inner (mm)	min (mm)	max (mm)	min (mm)	max (mm)	min (mm)	max (mm)	min (mm)	max (mm)	
95-300	48	44	12	20	17	40	N/A	N/A	N/A	N/A	



## Schematic Diagram



### Enclosure Dimensions

Width	520 mm
Length	420 mm
Height	290 mm
Weight	27 kg

### Filling Compound (Optional)

Volume	N/A
--------	-----

\* Customer bonding cable data sheet needs to be provided during order stage due to different cable specifications.