

**LIST OF MAIN PARTS**

Item	Name of parts	Materials
1	CABINET	STAINLESS STEEL
2	CABLE FLEXCON	TINNED COPPER
3	SUPPORT INSULATOR	EPOXY
4	GLAND FOR BONDING CABLE	STAINLESS STEEL
5	GLAND FOR EARTHING CABLE	STAINLESS STEEL
6	DISCONNECTABLE EARTHING BAR	TINNED COPPER
7	EARTHING BUS BAR	TINNED COPPER
8	DISCONNECTABLE EARTHING BAR	TINNED COPPER
9	BOX EARTHING BAR	STAINLESS STEEL
10	PROTECTION COVER	PLEXYGlass
11	DOOR FIXING BOLTS	STAINLESS STEEL
12	PADLOCK FACILITY	STAINLESS STEEL
13	COVER	STAINLESS STEEL

Specifications	
Protection degree	IP66
Bonding cable (Single)	95-400 mm <sup>2</sup>
Weight	app. 44 Kg.
Volume of Filling compound (optional)	-
Colour	RAL 7032

TYPE / DRAWING NO :

**LB.W.E.3.1 / 04.09.02**

Earthing Link Box For Wall Type

ARTICLE NO:

**05702001**

Drawn : 25.11.2021 / G.O.

Approved : 25.11.2021 / S.E.

# LINK BOX TECHNICAL DATA SHEET

**Drw. No. 04.09.02**  
**Article No. 05702001**

*Issued Date:* 10.05.2019  
*Rev. Date:* 9.12.2021  
*Rev.* 04

Type	LB. W. E	. 3 . 1
- Description	Three Phase Earthing Link Box for Single Cable	
- Designation		Wall Type
- Bonding		Earthing
- Sheath Voltage Limiter		N/A
- Phase No.		3
- Earth		1
<b>Drawing Number</b>		<b>04.09.02</b>
- Article No		05702001
<b>Electrical Characteristics</b>		
- Rated Frequency	50/60	Hz
- SVL Type (*)		N/A
<b>Protection Class</b>		<b>IP 66</b>
<b>Material</b>		
- Enclosure	Stainless Steel AISI304	
- Body Thickness		2 mm
- Cover Thickness		3 mm
- Connection Links	10 µm Tinned Electrolytic Copper	
- Connection Links Dimension		40x10 mm (400 mm <sup>2</sup> )
- Material of connection links cover		N/A
- Safety Earthing Connection	w/o Safety Earthing Connection	
- Gasket		Silicone
- Cable Glands		4x48 mm
- Other Glands (PD Sensor Cables / IR Sensor Cables ... etc.)		N/A
- Cable Glands Insulation	Silicone gasket & EPR tape	
- Other Glands Insulation		N/A
- Insulation	Epoxy Support Insulator + Stainless Steel Base Plate	
- Conductor Fixing	Conductor Flexconn - 95-400 mm <sup>2</sup>	
- Painting Process	Electro Static Polyester Powder Paint	
- Painting Code		RAL 7032
- Labeling Material		Stainless Steel
- Fixing Bolts		A2 - AISI 304
- Protection Cover		PET-G
- Separators		w/o separator
- Insulating Sheds		N/A
<b>AC Impulse Test</b>		
- Phase-to-Phase	N/A	kV
- Phase-to-Earth	37,5	kV
<b>Voltage Withstand Test</b>		
- AC	20	kV/1 min
- DC	25	kV/5 min
<b>Short Circuit Test</b>		
- Symmetrical	50	kA/1sec
<b>Internal Power Arcing Test (Symmetrical)</b>		
	40	kA/0.1 sec

\* In case of mismatch in given values, technical drawing provided along with the Order Confirmation is valid. Ask for conformity if SVL is out of order scope.

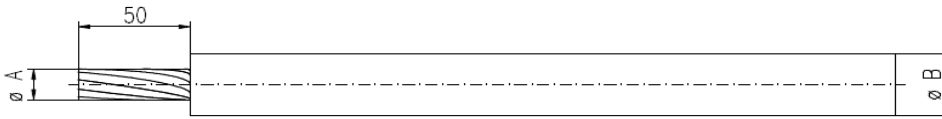
# LINK BOX TECHNICAL DATA SHEET

**Drw. No. 04.09.02**  
**Article No. 05702001**

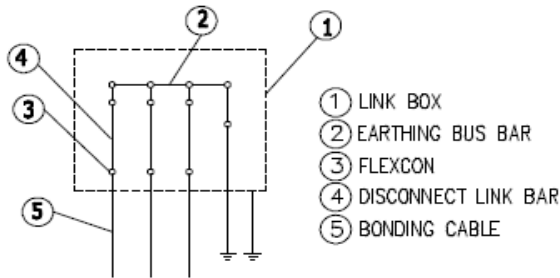
*Issued Date:* 10.05.2019  
*Rev. Date:* 9.12.2021  
*Rev.* 04

**Bonding Cable (\*)**

- Type												Single
	<b>Gland Dia</b>		<b>A</b>		<b>B</b>		<b>C</b>		<b>D</b>			
Cross-Section (mm <sup>2</sup> )	Outer (mm)	Inner (mm)	min (mm)	max (mm)	min (mm)	max (mm)	min (mm)	max (mm)	min (mm)	max (mm)		
95-400	48	44	12	24	17	40	N/A	N/A	N/A	N/A		



**Schematic Diagram**



**Enclosure Dimensions**

Width	650 mm
Length	500 mm
Height	250 mm
Weight	44 kg

**Filling Compound (Optional)**

Volume	N/A
--------	-----

\* Customer bonding cable data sheet needs to be provided during order stage due to different cable specifications.

# LINK BOX TECHNICAL DATA SHEET

**Drw. No. 04.09.02**  
**Article No. 05702001**

*Issued Date:* 10.05.2019  
*Rev. Date:* 9.12.2021  
*Rev.* 04

Type	LB. W. E	. 3 . 1
- Description	Three Phase Earthing Link Box for Single Cable	
- Designation	Wall Type	
- Bonding	Earthing	
- Sheath Voltage Limiter	N/A	
- Phase No.	3	
- Earth	1	
<b>Drawing Number</b>	<b>04.09.02</b>	
- Article No	05702001	
<b>Electrical Characteristics</b>		
- Rated Frequency	50/60	Hz
- SVL Type (*)	N/A	
<b>Protection Class</b>	<b>IP 66</b>	
<b>Material</b>		
- Enclosure	Stainless Steel AISI304	
- Body Thickness	2 mm	
- Cover Thickness	3 mm	
- Connection Links	10 µm Tinned Electrolytic Copper	
- Connection Links Dimension	40x10 mm (400 mm <sup>2</sup> )	
- Material of connection links cover	N/A	
- Safety Earthing Connection	w/o Safety Earthing Connection	
- Gasket	Silicone	
- Cable Glands	4x48 mm	
- Other Glands (PD Sensor Cables / IR Sensor Cables ... etc.)	N/A	
- Cable Glands Insulation	Silicone gasket & EPR tape	
- Other Glands Insulation	N/A	
- Insulation	Epoxy Support Insulator + Stainless Steel Base Plate	
- Conductor Fixing	Conductor Flexconn - 95-400 mm <sup>2</sup>	
- Painting Process	Electro Static Polyester Powder Paint	
- Painting Code	RAL 7032	
- Labeling Material	Stainless Steel	
- Fixing Bolts	A2 - AISI 304	
- Protection Cover	PET-G	
- Separators	w/o separator	
- Insulating Sheds	N/A	
<b>AC Impulse Test</b>		
- Phase-to-Phase	N/A	kV
- Phase-to-Earth	37,5	kV
<b>Voltage Withstand Test</b>		
- AC	20	kV/1 min
- DC	25	kV/5 min
<b>Short Circuit Test</b>		
- Symmetrical	50	kA/1sec
<b>Internal Power Arcing Test (Symmetrical)</b>		
	40	kA/0.1 sec

\* In case of mismatch in given values, technical drawing provided along with the Order Confirmation is valid. Ask for conformity if SVL is out of order scope.

# LINK BOX TECHNICAL DATA SHEET

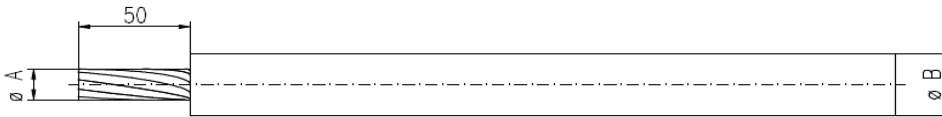
**Drw. No. 04.09.02**  
**Article No. 05702001**

*Issued Date:* 10.05.2019  
*Rev. Date:* 9.12.2021  
*Rev.* 04

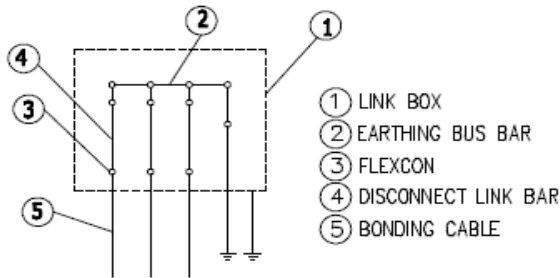
## Bonding Cable (\*)

- Type Single

Cross-Section (mm <sup>2</sup> )	Gland Dia		A		B		C		D	
	Outer (mm)	Inner (mm)	min (mm)	max (mm)	min (mm)	max (mm)	min (mm)	max (mm)	min (mm)	max (mm)
95-400	48	44	12	24	17	40	N/A	N/A	N/A	N/A



## Schematic Diagram



### Enclosure Dimensions

Width	650 mm
Length	500 mm
Height	250 mm
Weight	44 kg

### Filling Compound (Optional)

Volume	N/A
--------	-----

\* Customer bonding cable data sheet needs to be provided during order stage due to different cable specifications.